



# target | T2S services

Target2-Securities

User Handbook

R2024.JUN

26 July 2024

# 1 Sitemap for T2S GUI

## 1.1 Reader's Guide

The sitemap annex is structured along the first and the second GUI menu level. It provides you with a formalised illustration of all screens (pictured as rectangles) and their related buttons (pictured as arrows). The illustration helps you to get an overview of all GUI screens and their interrelation, indicated by the arrows.

**General layout of a sitemap** In general, each sitemap has the same layout. The header of the sitemap always indicates the GUI menu item pictured by the sitemap. The first 3 lines represent the 3 main menu levels.

Menu Name	
Menu Level 1	
Menu Level 2	
Menu Level 3	

Illustration 1: Sitemap menu levels – GUI path

In lines 4 to 6, the single GUI screens are pictured following their business logic, i.e. starting with *search/list* screens in line 4, *details* or *enter* screens in line 5 and finishing with *revisions/audit trail – list* screens in line 6.

Search / List Screen	
Details / Enter Screen	
Revision / Audit Trail	

Illustration 2: Sitemap menu levels - screens

Within these lines, regular rectangles represent a menu item, rounded rectangles represent a screen.

Menu Securities	
Menu Level 1	M1 Securities
Menu Level 2	M1.1 Securities Account      M1.2 Settlement
Menu Level 3	M1.1.1 Securities Positions   M1.1.2 Securities Postings   M1.1.3 Securities Restriction   M1.2.1 Settlement Instructions   M1.2.2 Intra-Position Movements   M1.2.3 Maintenance Securities Instructions   M1.2.4 Settlement Instruction Allegements   M1.2.5 Data Changes   M1.2.6 Securities Positions

Illustration 3: Menu item and sitemap screen illustration

**Interrelation between screens**

Arrows between the rectangles represent an interrelation, while the button that has to be clicked on to jump from one screen to another is written across the corresponding arrow.

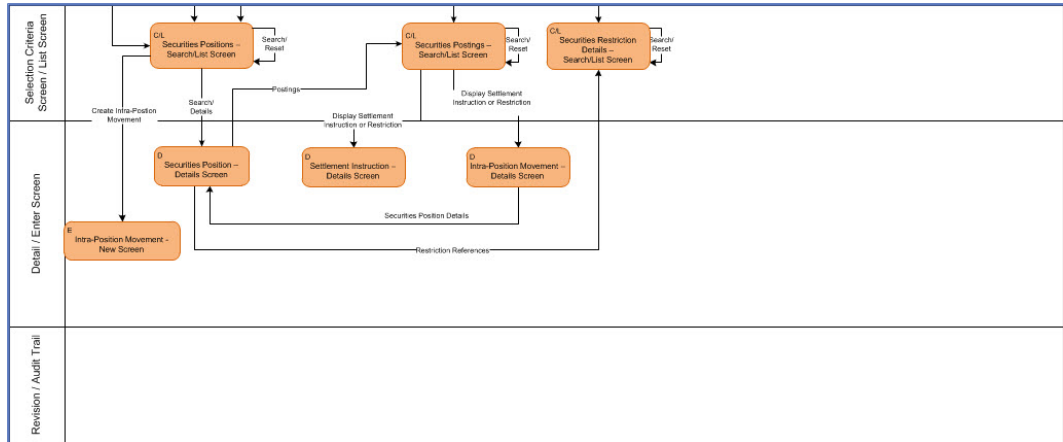


Illustration 4: Screen interrelation

**Menu item and screen rectangles**

The screen rectangles follow the same colour-coding as the GUI (see menu structure). The classification found in the top left corner of each rectangle provides the following detailed information:

- Capital M for menu followed by max. 3 digits indicating the main menu item (1 for securities, 2 for cash, 3 for services, 4 for static data, 5 for monitoring) and following menu levels.
- Screen classification (C/L for *search/list* screen, C for *search* screen, L for *list* screen, D for *details* screen, E for *enter* screen).

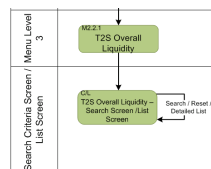


Illustration 5: Sitemap screen with classification and with button

**Screens with a different colour**

On some sitemaps you will also find screens illustrated in a different colour than it is foreseen for the respective T2S menu. These particular screens represent an alternative navigation to the same respective screen. These specific screens appear on the same menu level than the regular screens.

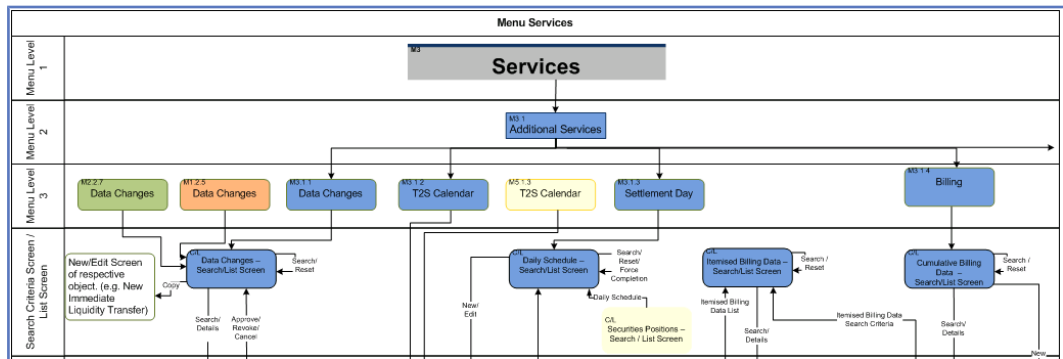


Illustration 6: Screens with a different colour

**Interrelation between sitemap parts**

Because of the size of the sitemap it has been split into several parts. You can recognise the use of several sitemap parts by an arrow leading to the next sitemap part.

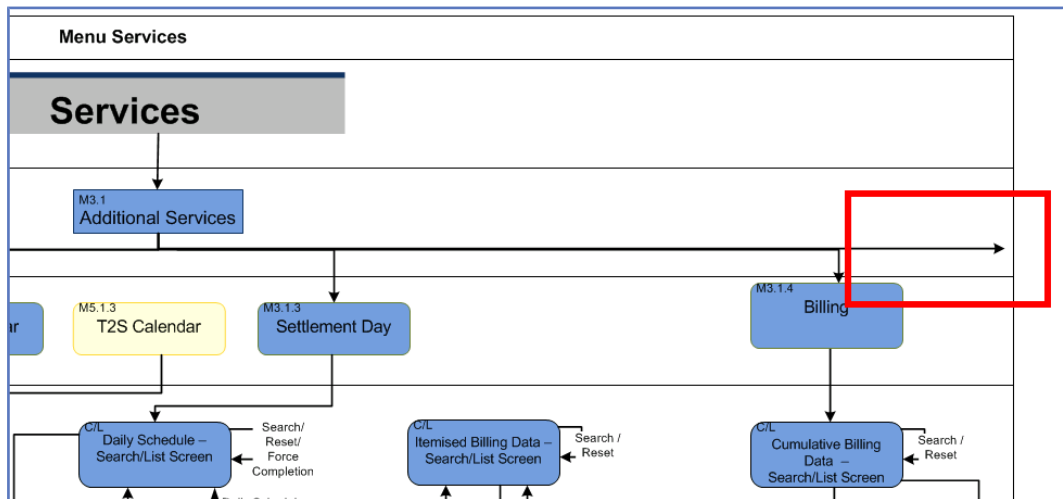


Illustration 7: Sitemap part interrelation

The static data sitemap for example is divided into 14 different sitemaps because of the wealth of information. Therefore it is recommended to read the sitemap from the top to the bottom and then from the left hand-side to the right hand-side.

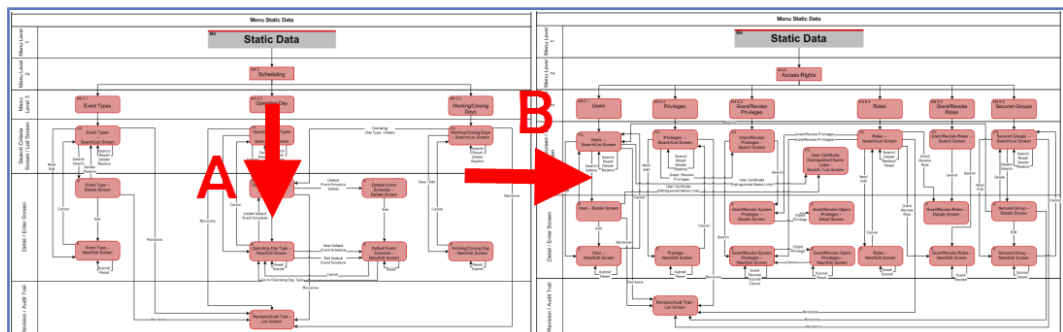
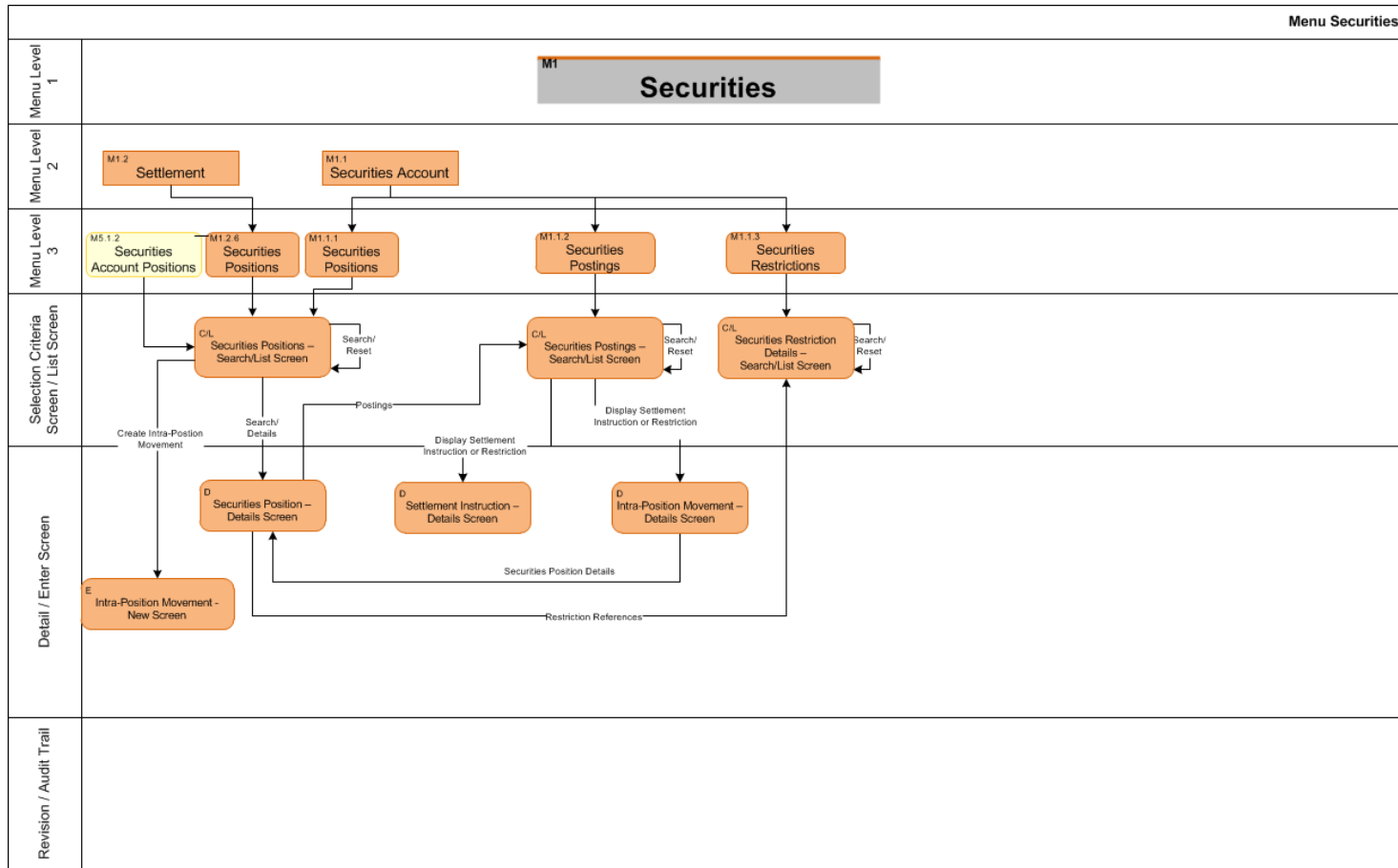


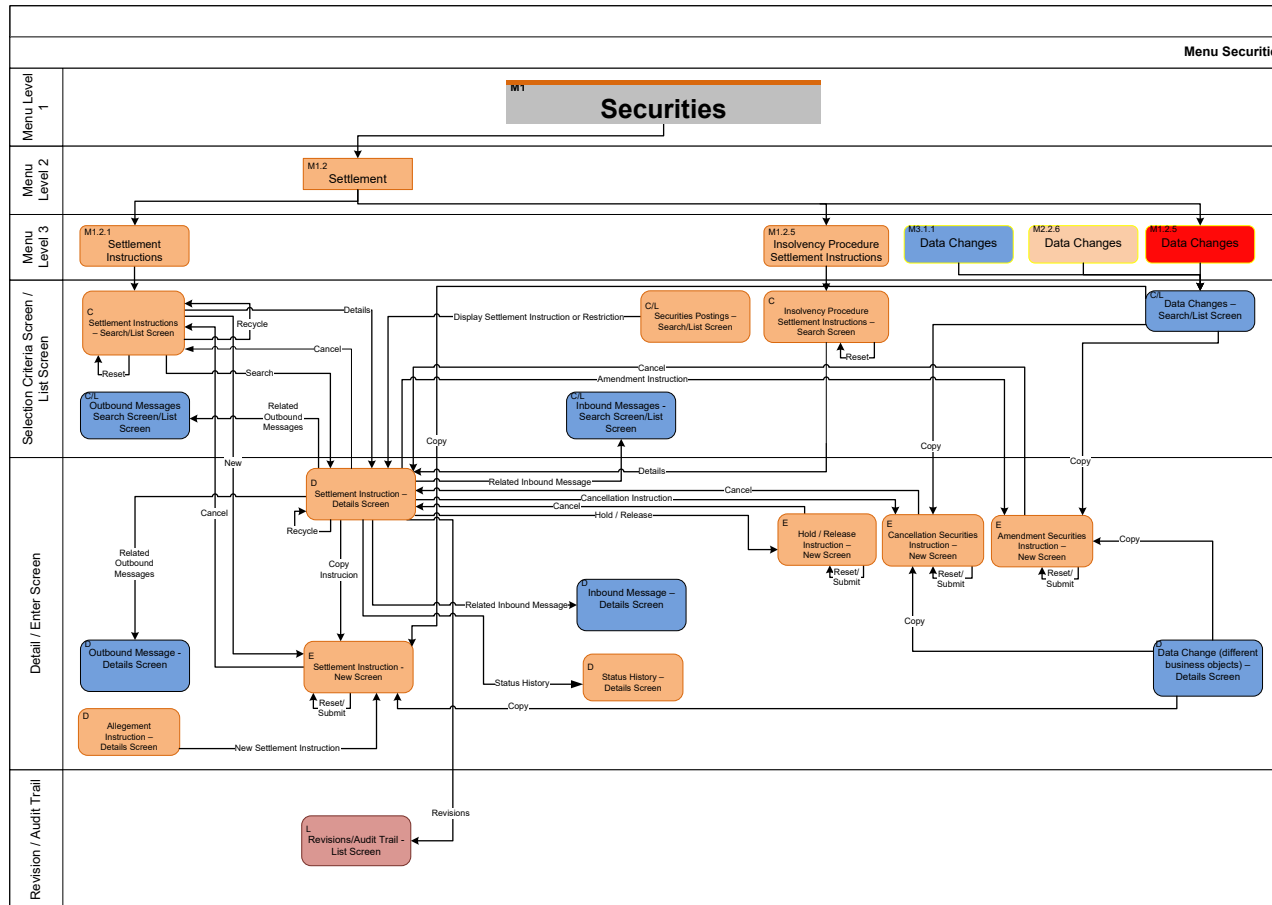
Illustration 8: How to read a sitemap

# 1.2 Securities

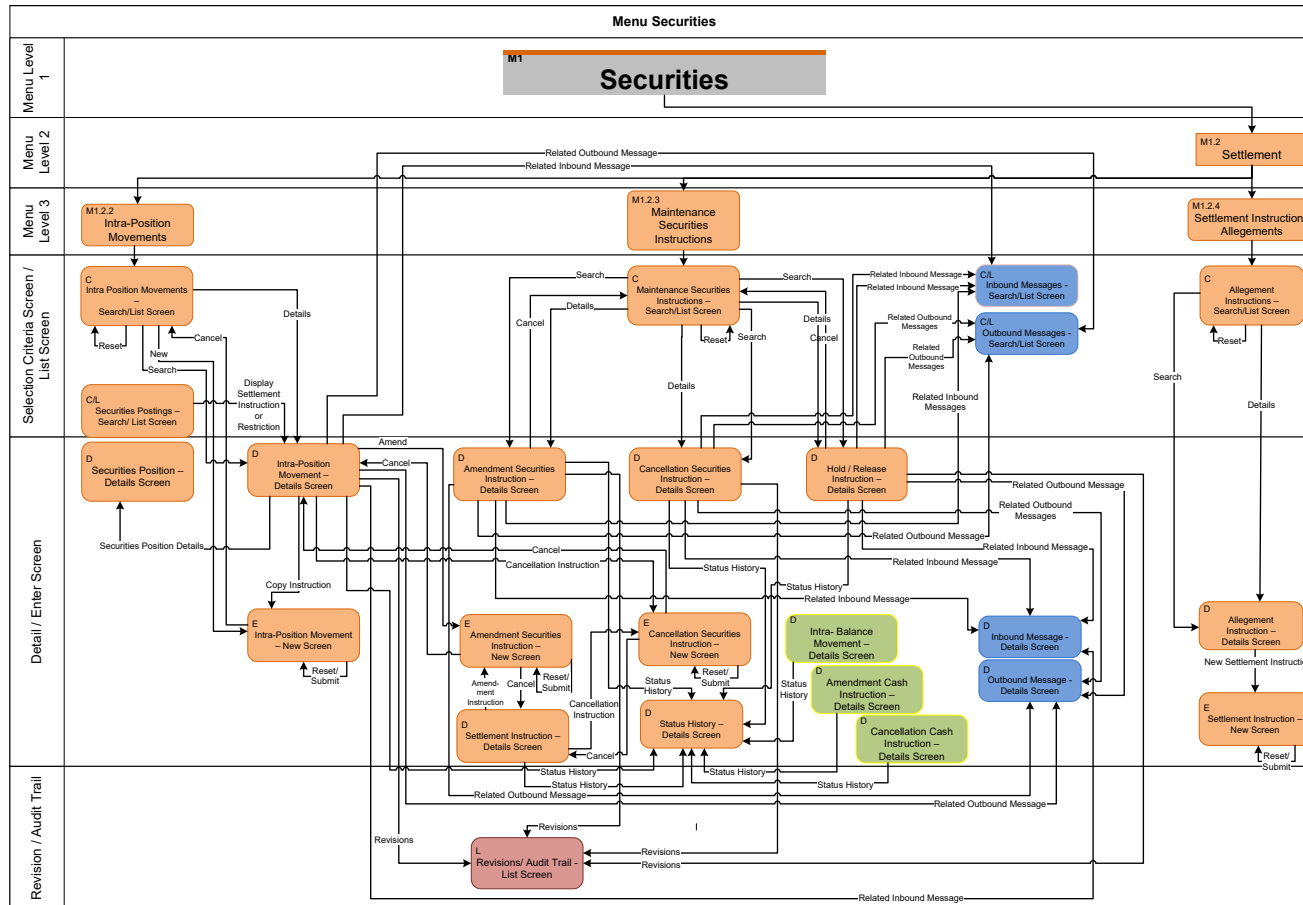
## 1.2.1 Securities Account



## 1.2.2 Settlement

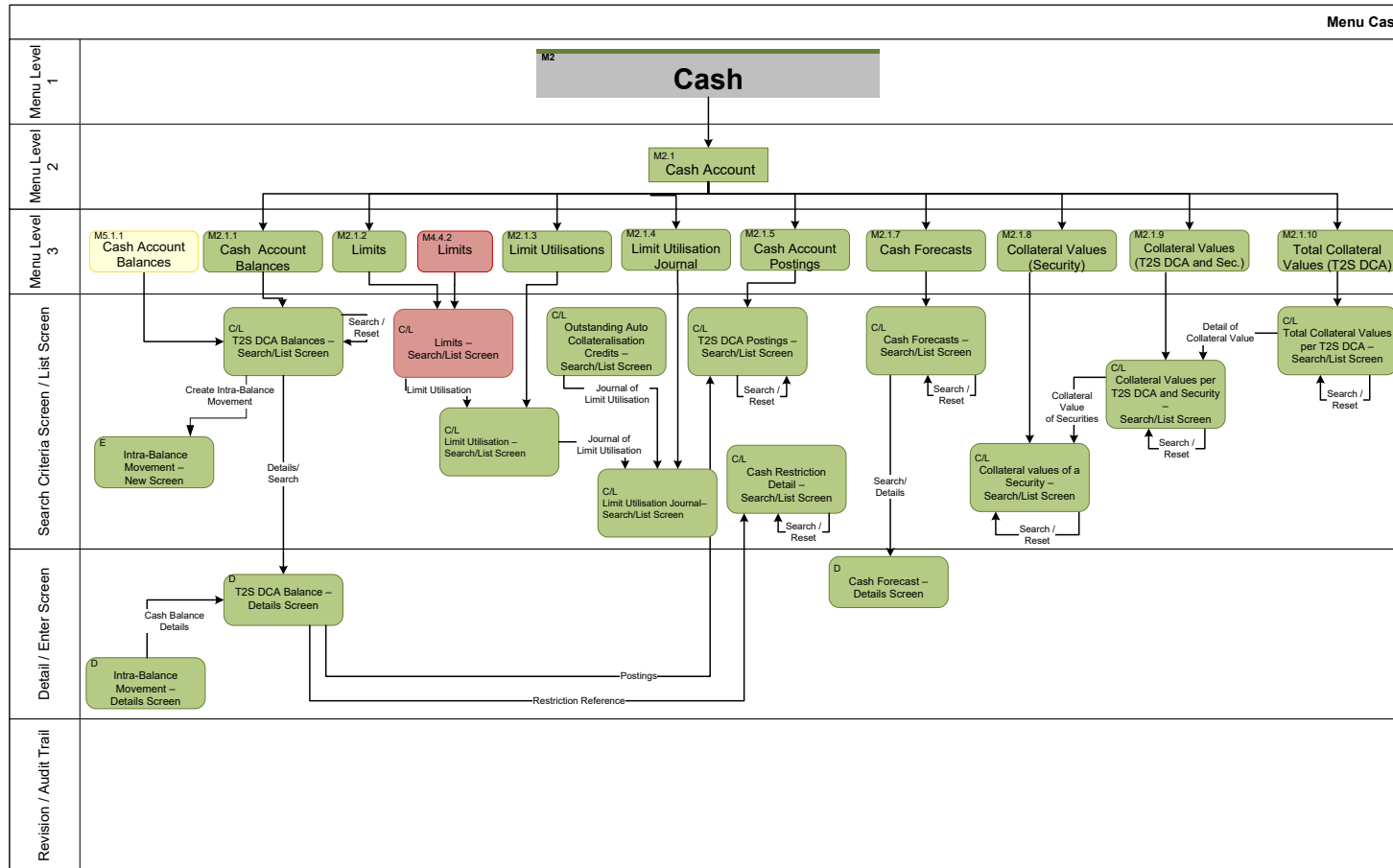


### 1.2.3 Settlement II



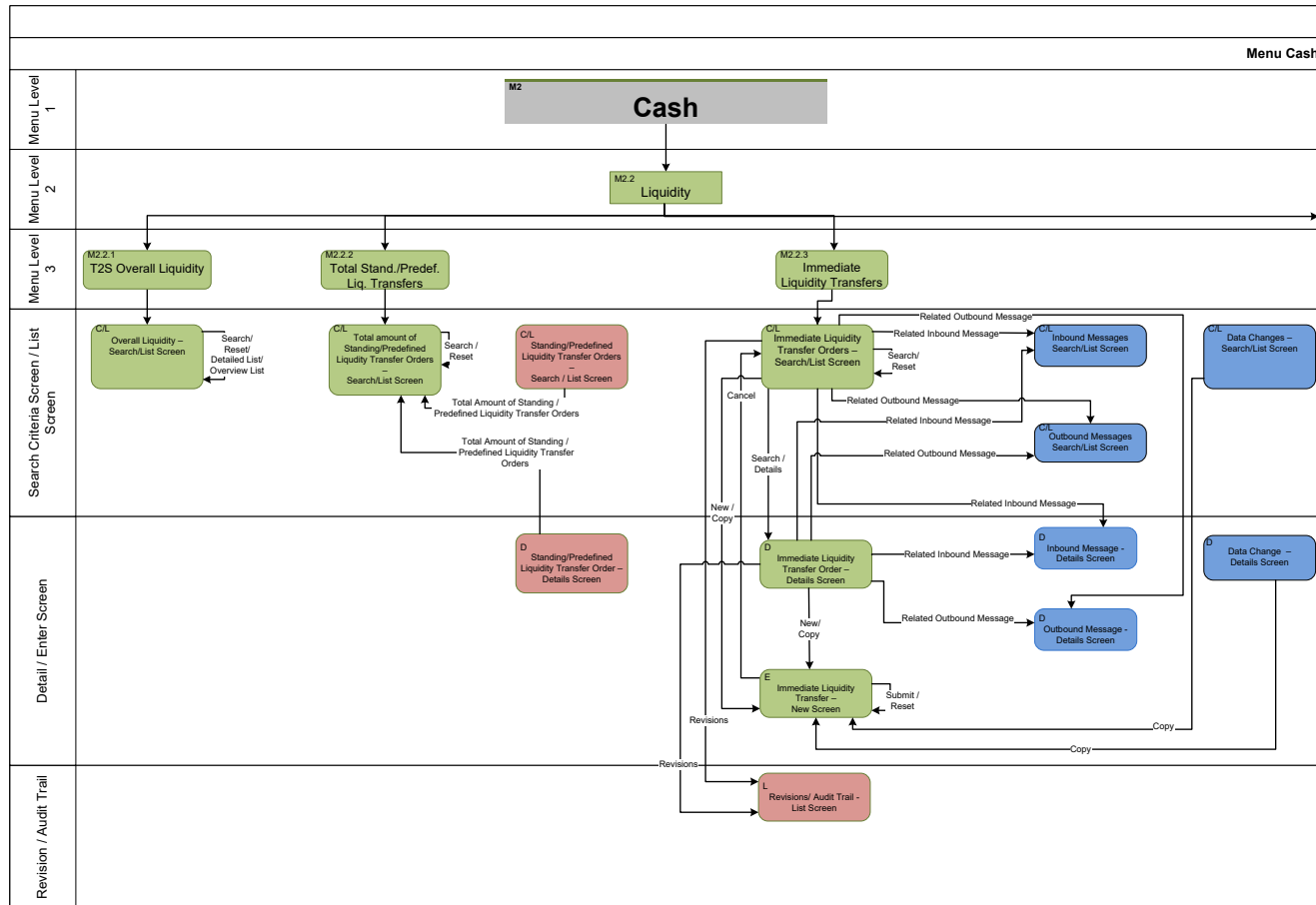
# 1.3 Cash

## 1.3.1 Cash Account

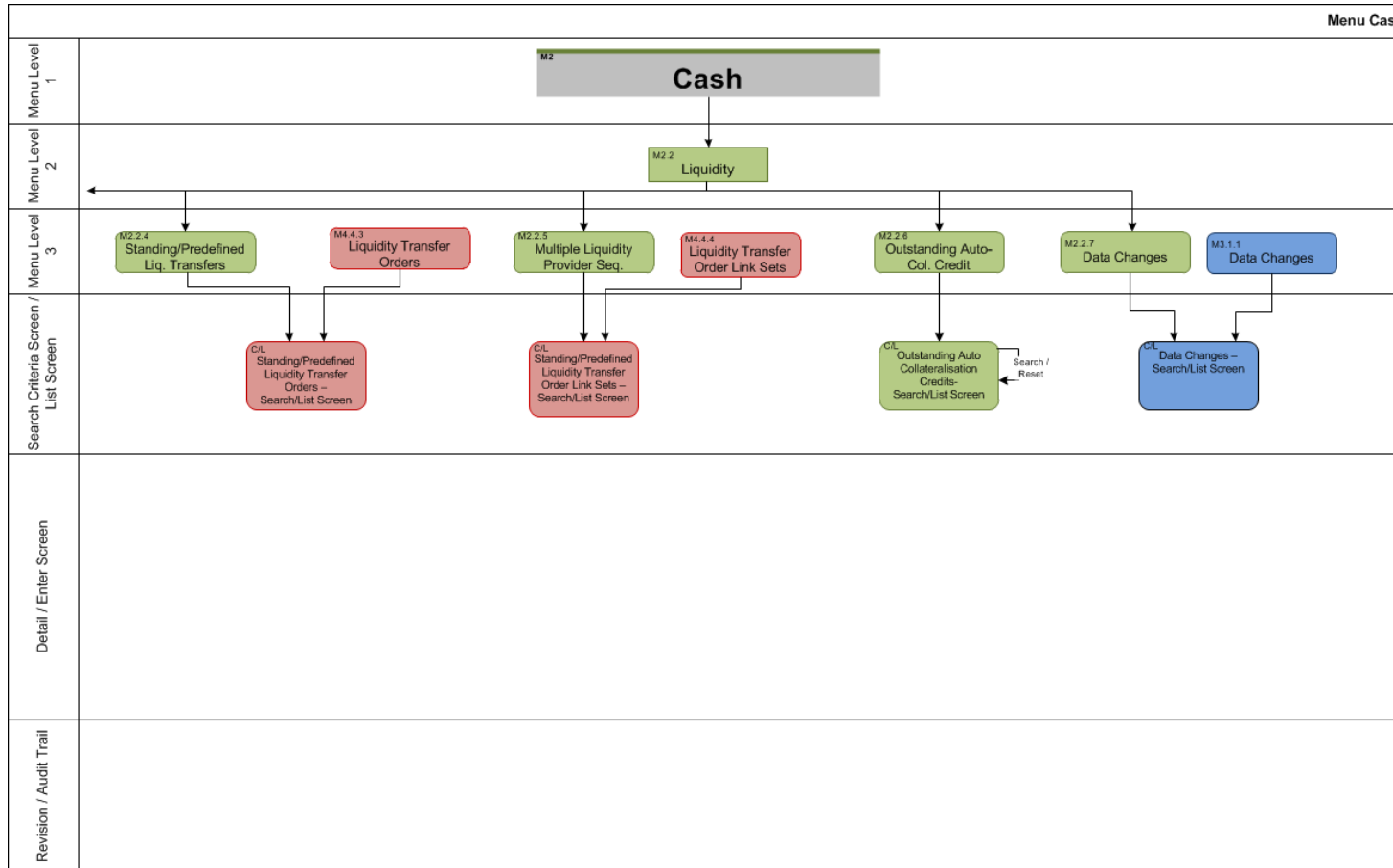




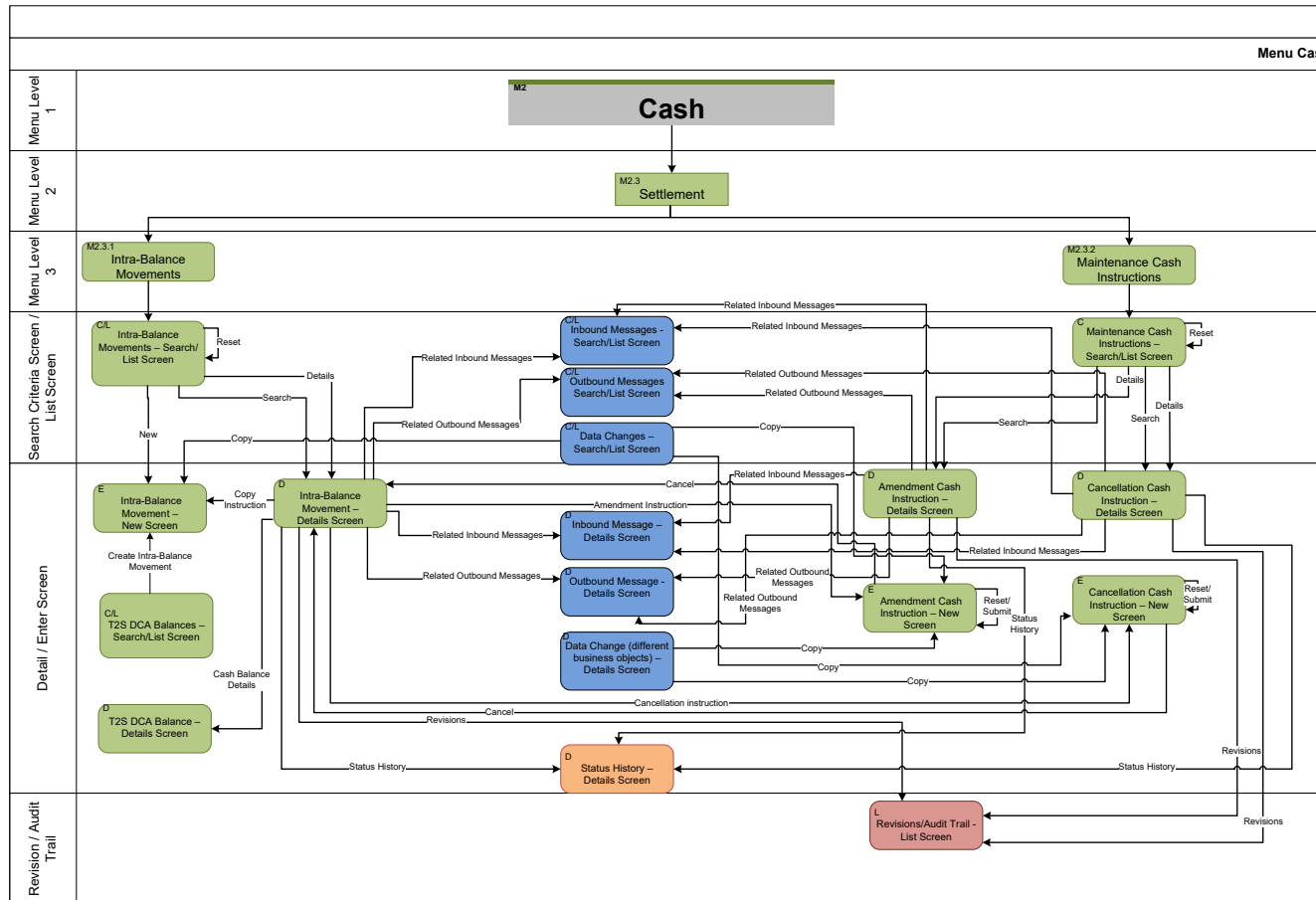
### 1.3.2 Liquidity



### 1.3.3 Liquidity II

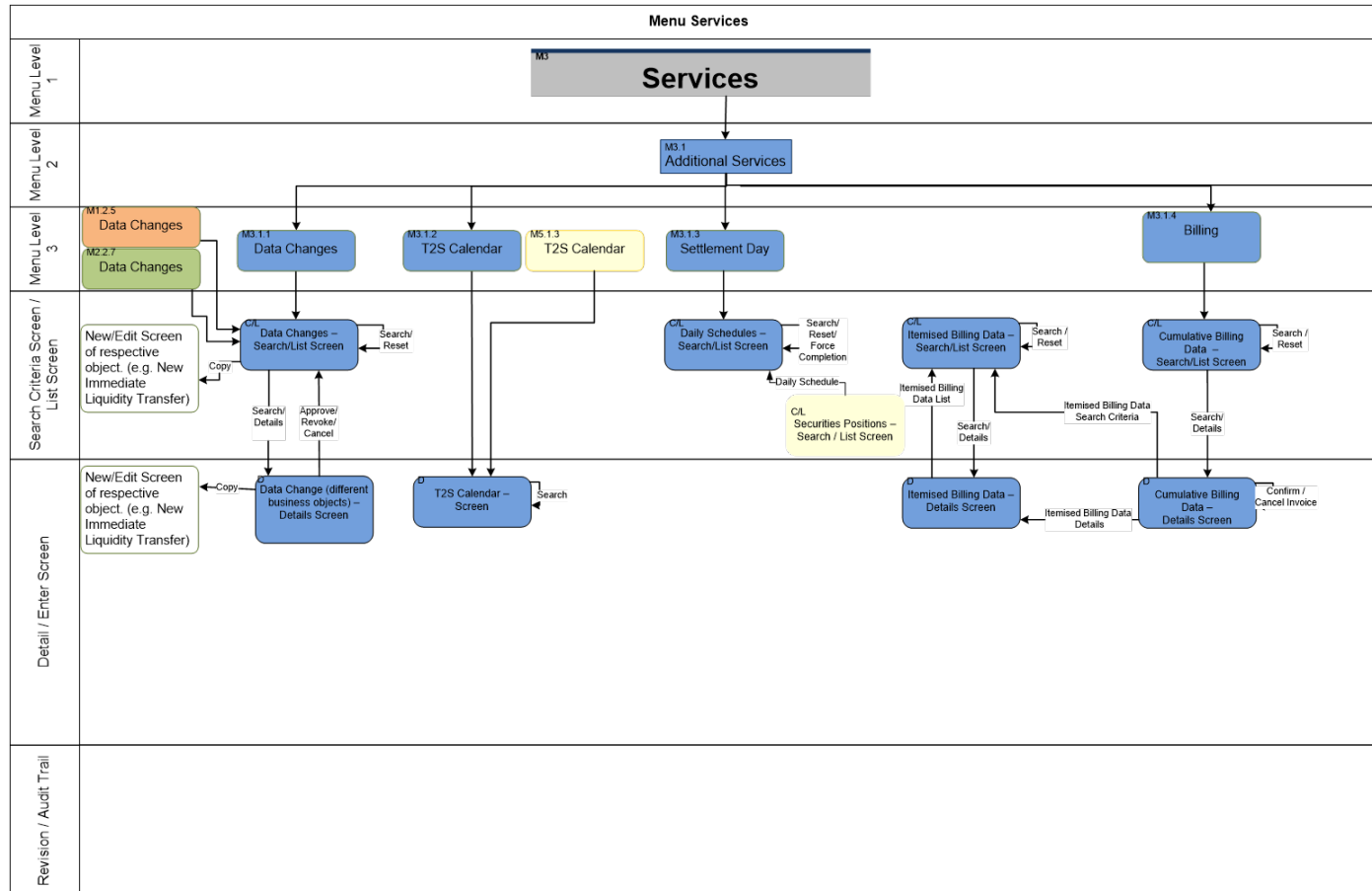


### 1.3.4 Settlement

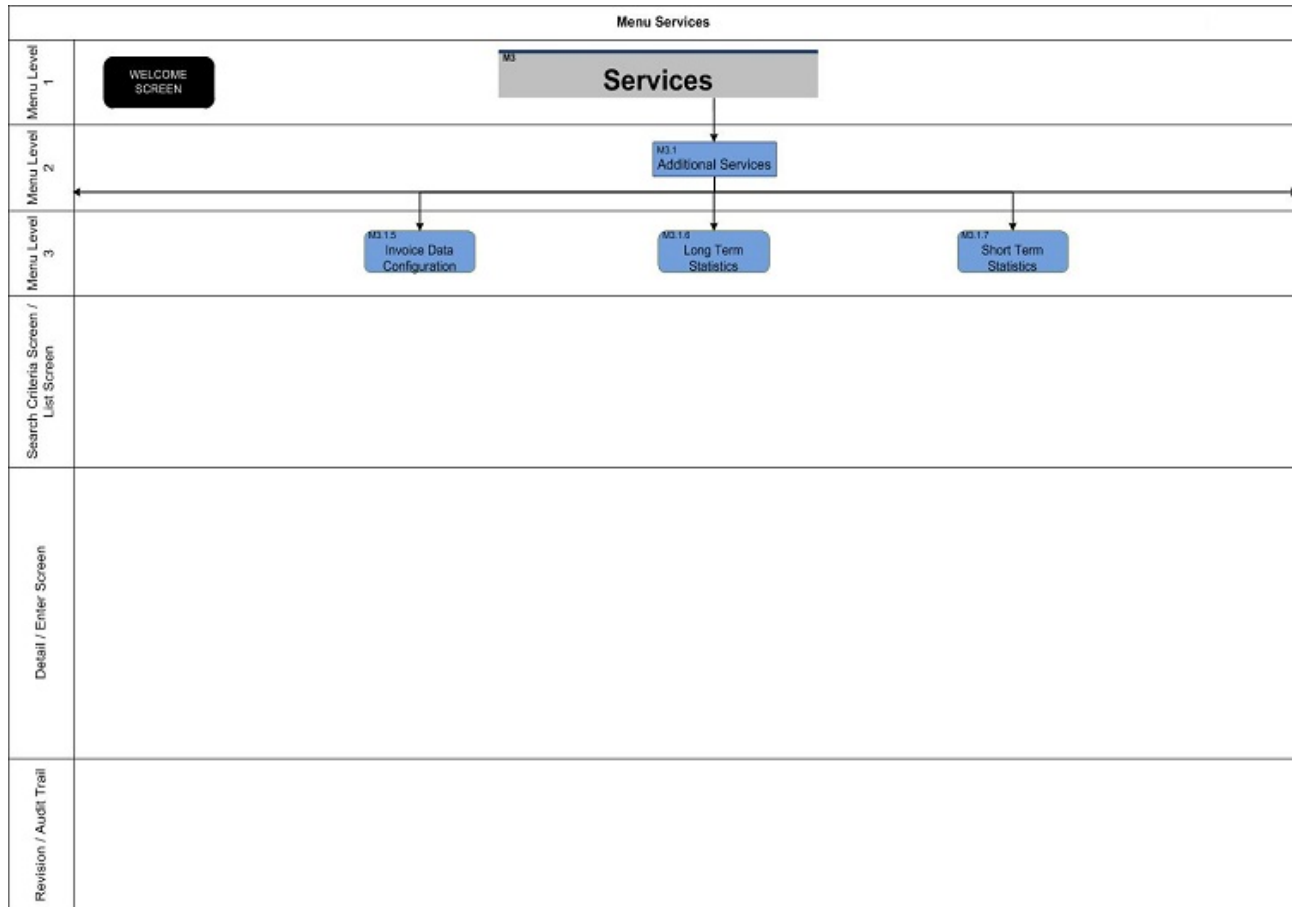


# 1.4 Services

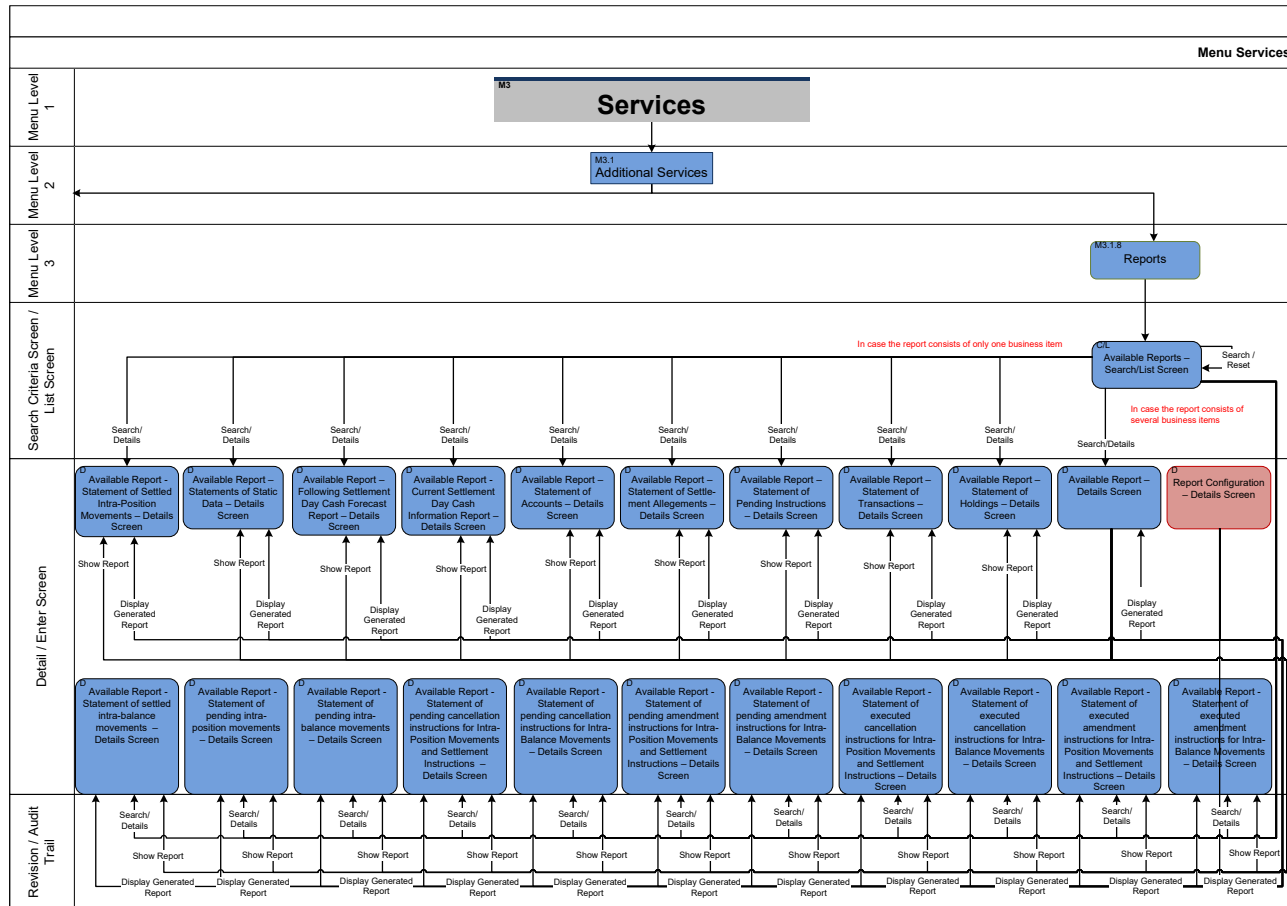
## 1.4.1 Additional Services



## 1.4.2 Additional Services II



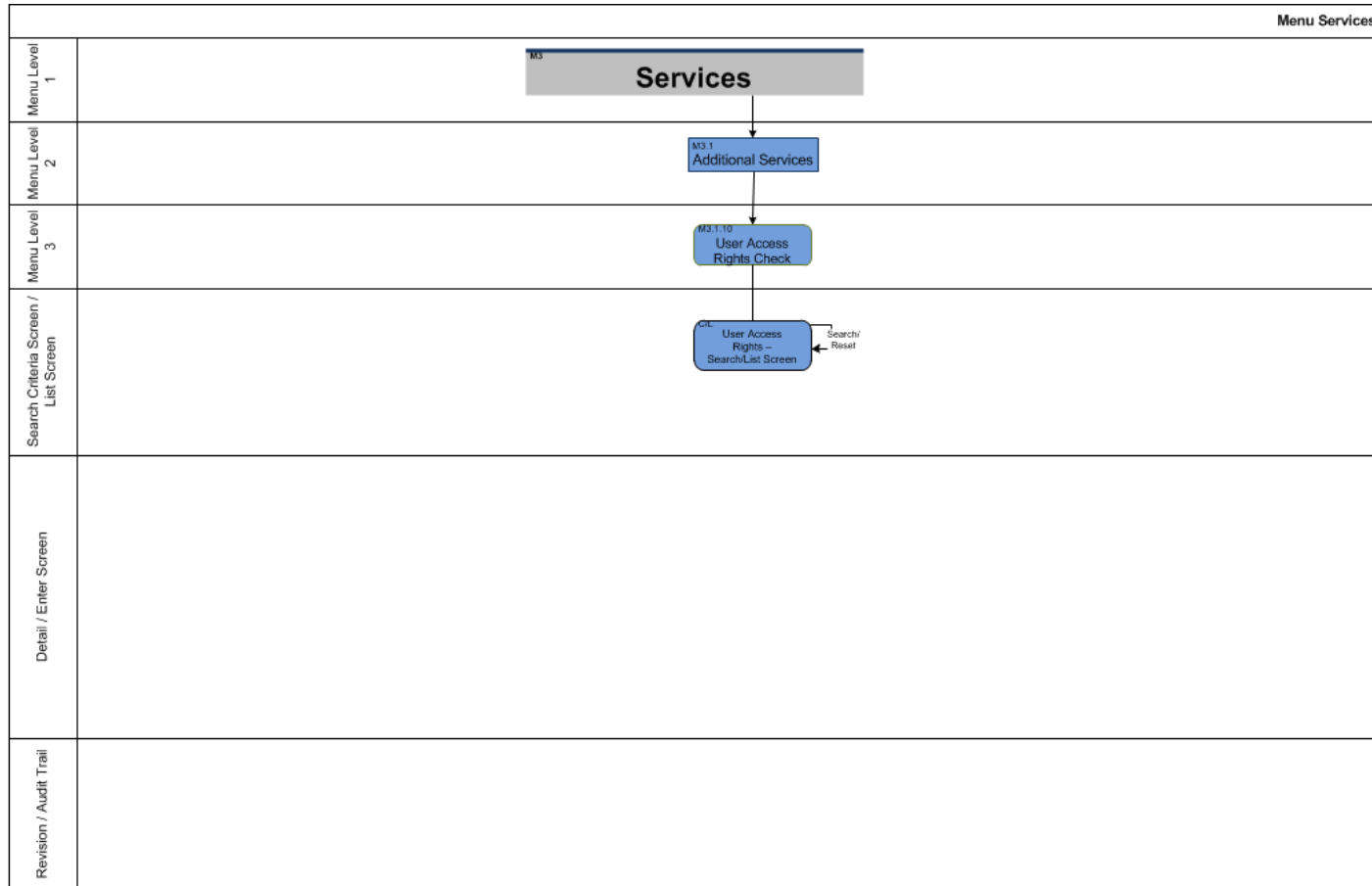
### 1.4.3 Additional Services III



### 1.4.4 Additional Services IV


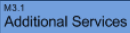
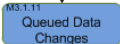

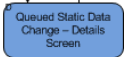


### 1.4.5 Additional Services V

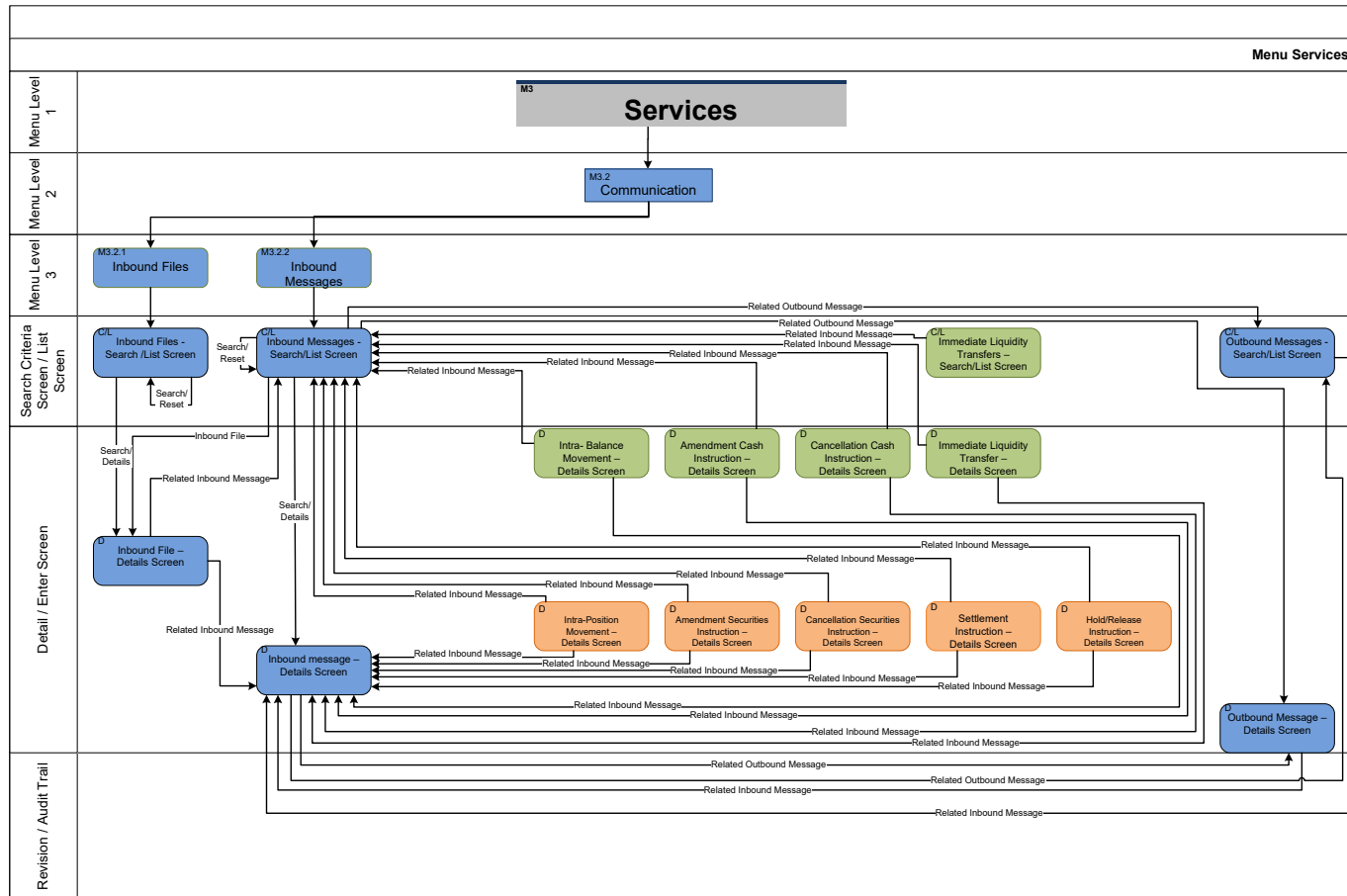




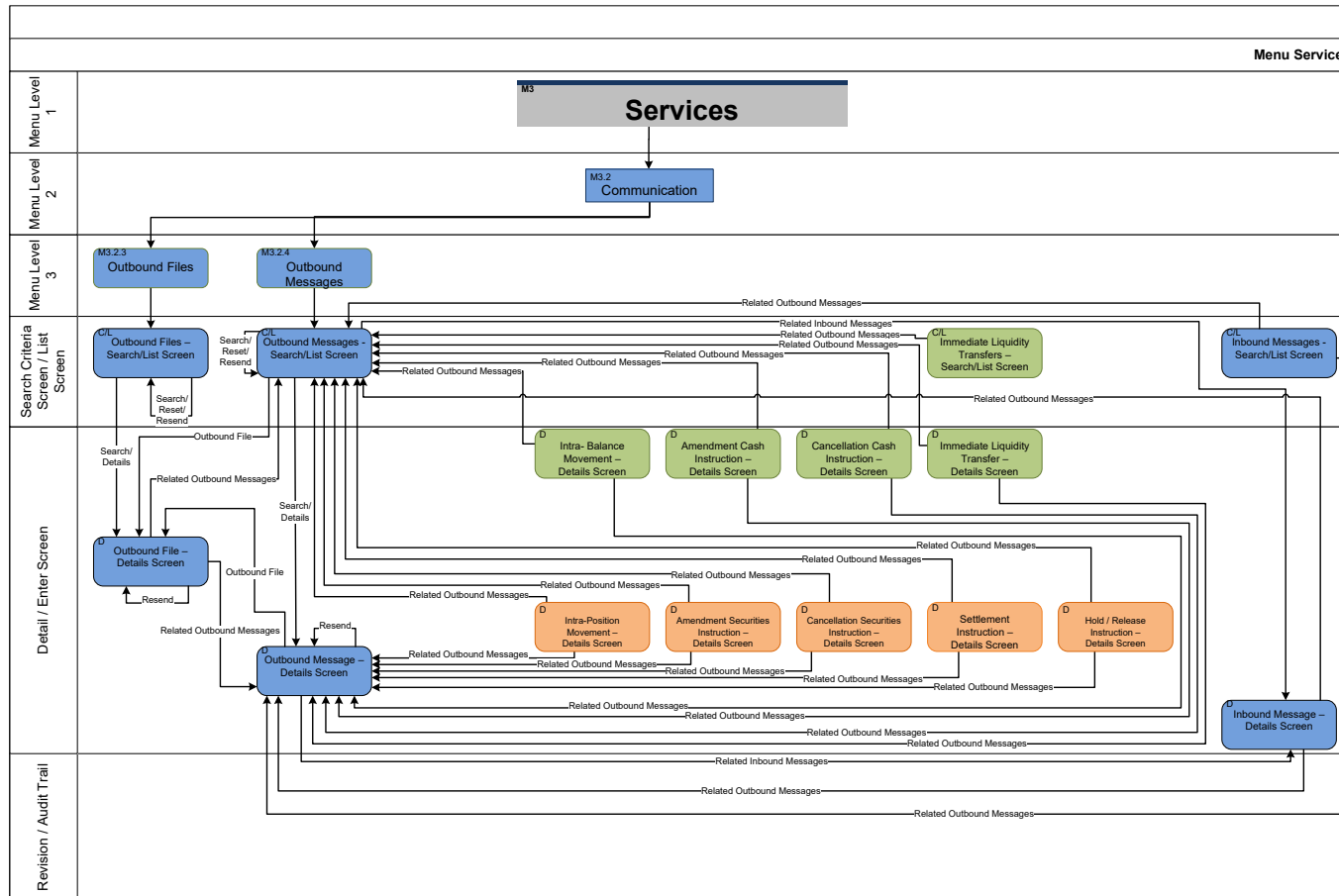
### 1.4.6 Additional Services VI

Menu Services	
Menu Level 1	<div style="text-align: center;">  </div>
Menu Level 2	<div style="text-align: center;">  </div>
Menu Level 3	<div style="text-align: center;">  </div>
Search Criteria Screen / List Screen	<div style="text-align: center;">  </div>
Detail / Enter Screen	<div style="text-align: center;">  </div>
Revision / Audit Trail	

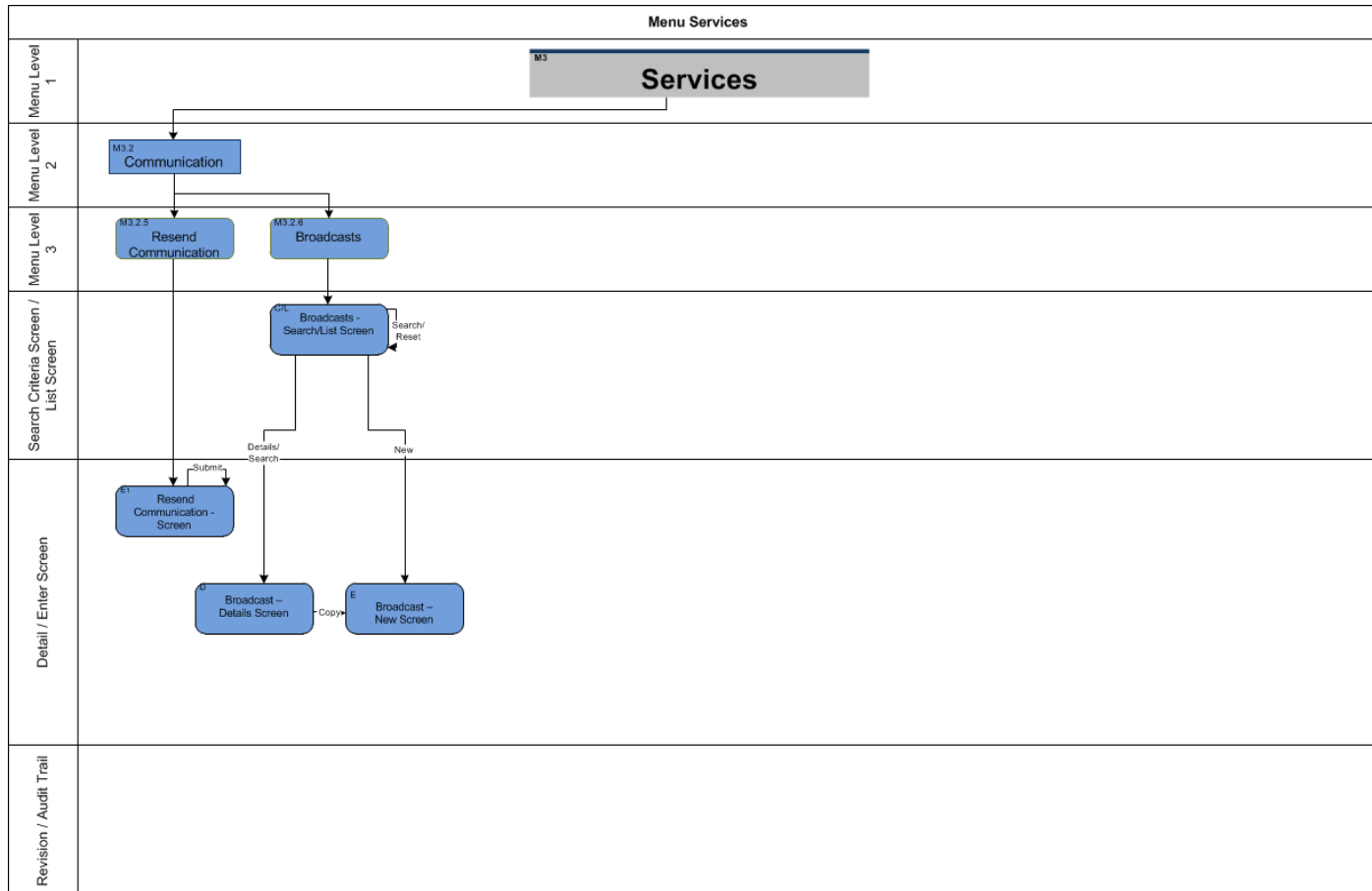
## 1.4.7 Communication



## 1.4.8 Communication II

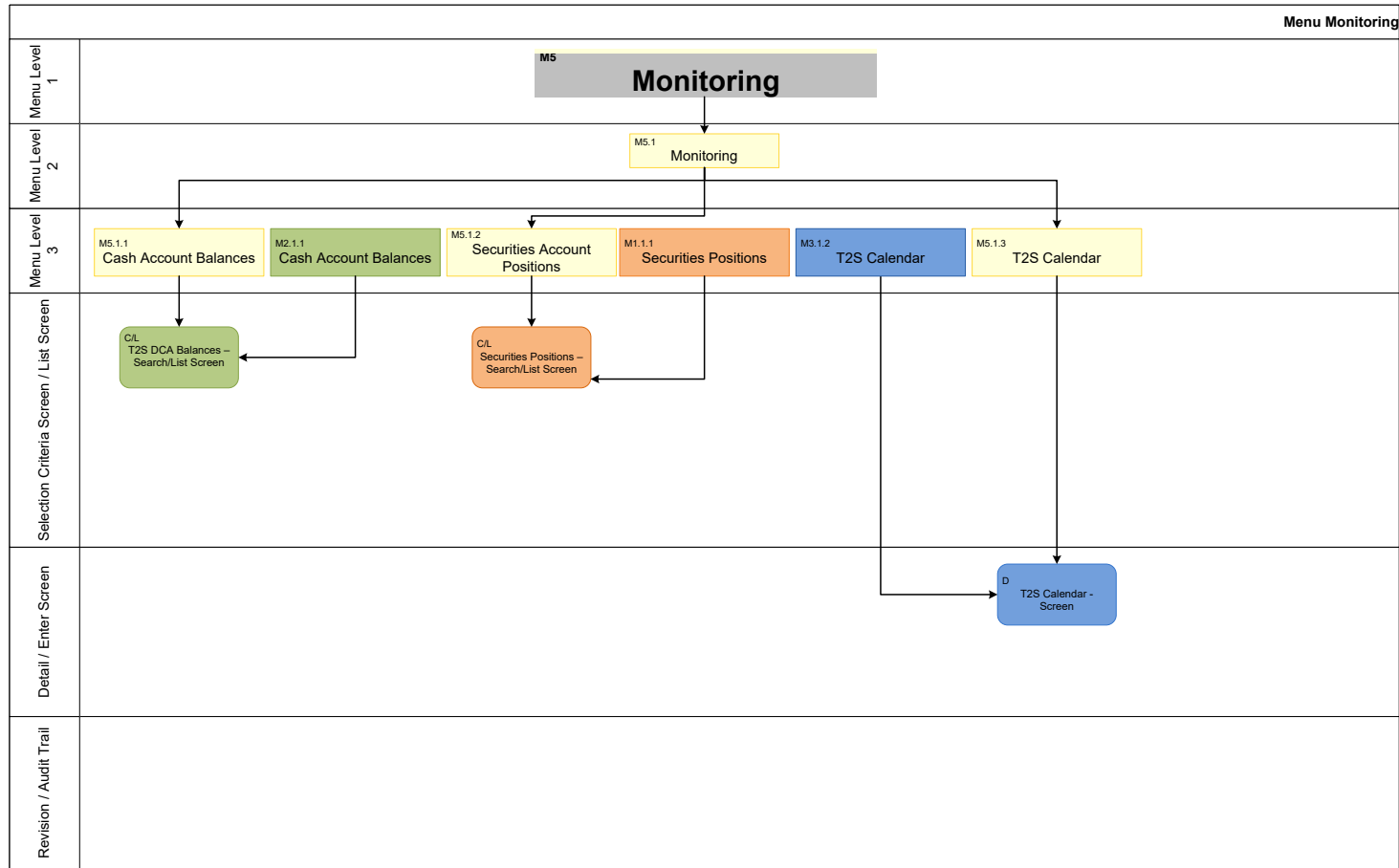


### 1.4.9 Communication III



# 1.5 Monitoring

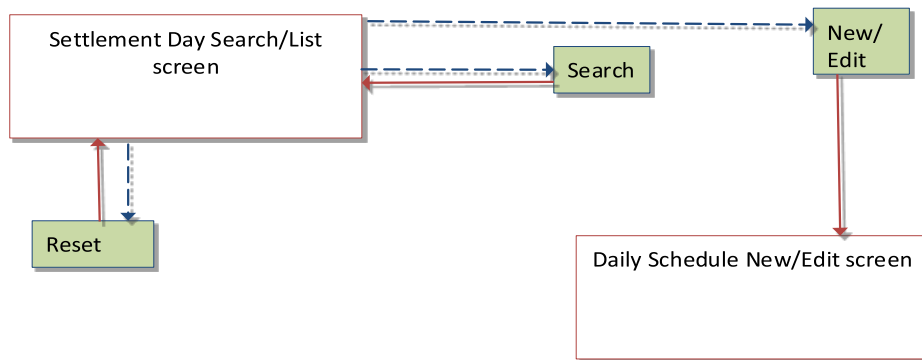
## 1.5.1 Monitoring



## 1.6 Business Day Management

### 1.6.1 Business Day Management

#### 1.6.1.1 Settlement Day



#### 1.6.1.2 Calendar

